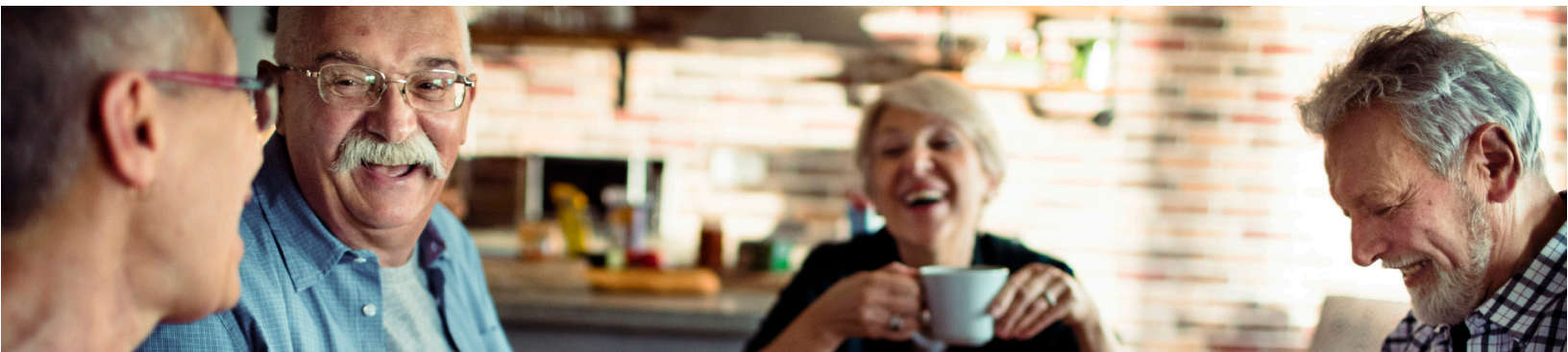


Online Graduate Programs for

# GERONTOLOGY



## Master's Degree (36 credits) Graduate Certificate (15 credits)

The Gerontology programs are offered 100% online, allowing students to complete coursework when it's convenient for them. Gerontology offers challenging and rewarding careers in a rapidly growing area. These programs prepare students with specialized knowledge and skills to lead businesses, government agencies, service organizations, educational institutions, and more to meet the needs of the aging population.

### Program highlights:

- All courses completely online
- Year-round admission
- GRE not required
- Courses start in January, August, & throughout the summer

### Students are...

- Working professionals
- Advancement seekers
- Career changers
- Enrolled part- or full-time in one to three courses at a time

<b>Iowa State Gerontology Courses (3 credits each)</b>	<b>Master's*</b>	<b>Certificate**</b>
Perspectives in Gerontology	Required	Required
Adult Development	Required	Required
Nutrition & Physical Activity in Aging	Required	Elective
Economics, Public Policy, & Aging	Required	Elective
Environments & Aging	Required	Elective
Aging in the Family	Required	Elective
Program Evaluation & Research Methods	Required	Elective
Professional Seminar in Gerontology	Required	Elective
Biological Principles of Aging	Elective	Elective
Cognitive Health	Elective	Elective
Creativity & Aging	Elective	Elective
Gerontechnology	Elective	Elective
Mental Health & Aging	Elective	Elective
Seminar in Long Term Care	Elective	Elective
Sexuality & Aging	Elective	Elective
Spirituality & Aging	Elective	Elective
Theories of Aging	Elective	Elective
<b>Total Number of Credits</b>	<b>36 credits</b>	<b>15 credits</b>

*\*Select four additional elective courses (12 credits) from the approved list*

*\*\*Select three additional elective courses (9 credits) from the approved list*

## Contacts

### Katie Mott

Campus Coordinator  
 kmott@iastate.edu  
 515-294-5397

### Dr. Jennifer Margrett

Faculty Advisor  
 margrett@iastate.edu  
 515-294-3028